



ELECTRI - SPREAD[®] PICK-UP SANDERS

SERIES II

**Parts List
&
Service Manual**

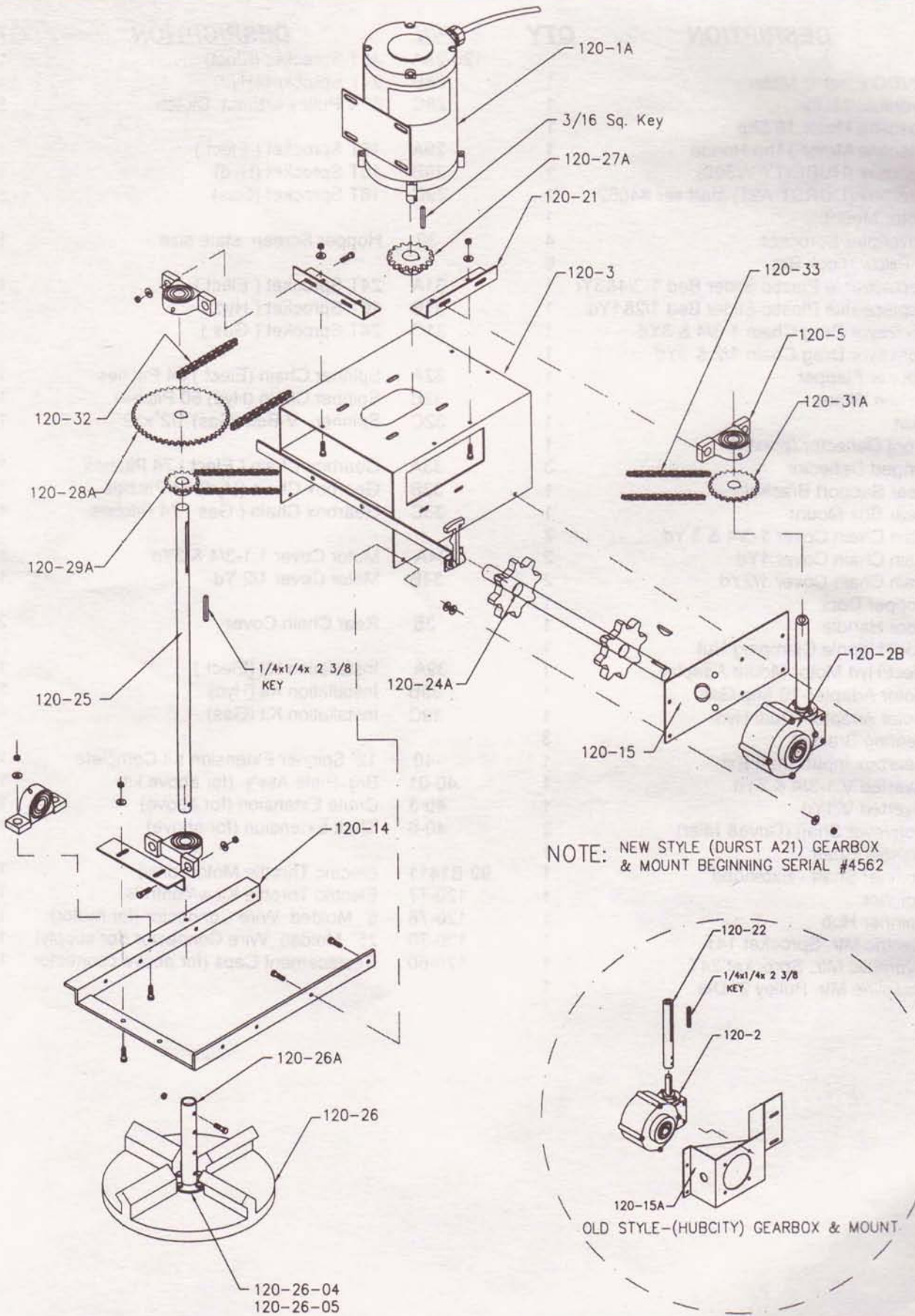
MFR BY: SMITH METAL WORKS OF NEWARK INC.
RT 31 EAST
NEWARK, NEW YORK STATE 14513
PHONE: 315-331-1651
FAX: 315-331-0910

All "Electri-Spread" Pick-up Sanders come equipped with a name plate attached to it. The model and serial numbers are stamped on the name plate. Always use the model and serial numbers in all correspondence regarding parts and or operation. All "Electri-Spread" Pick-up Sanders use either a 70 inch long conveyor frame (1/2 yd. and 1 yd.) or a 92 inch long conveyor frame (1 3/4 yd. and larger). 10/2002

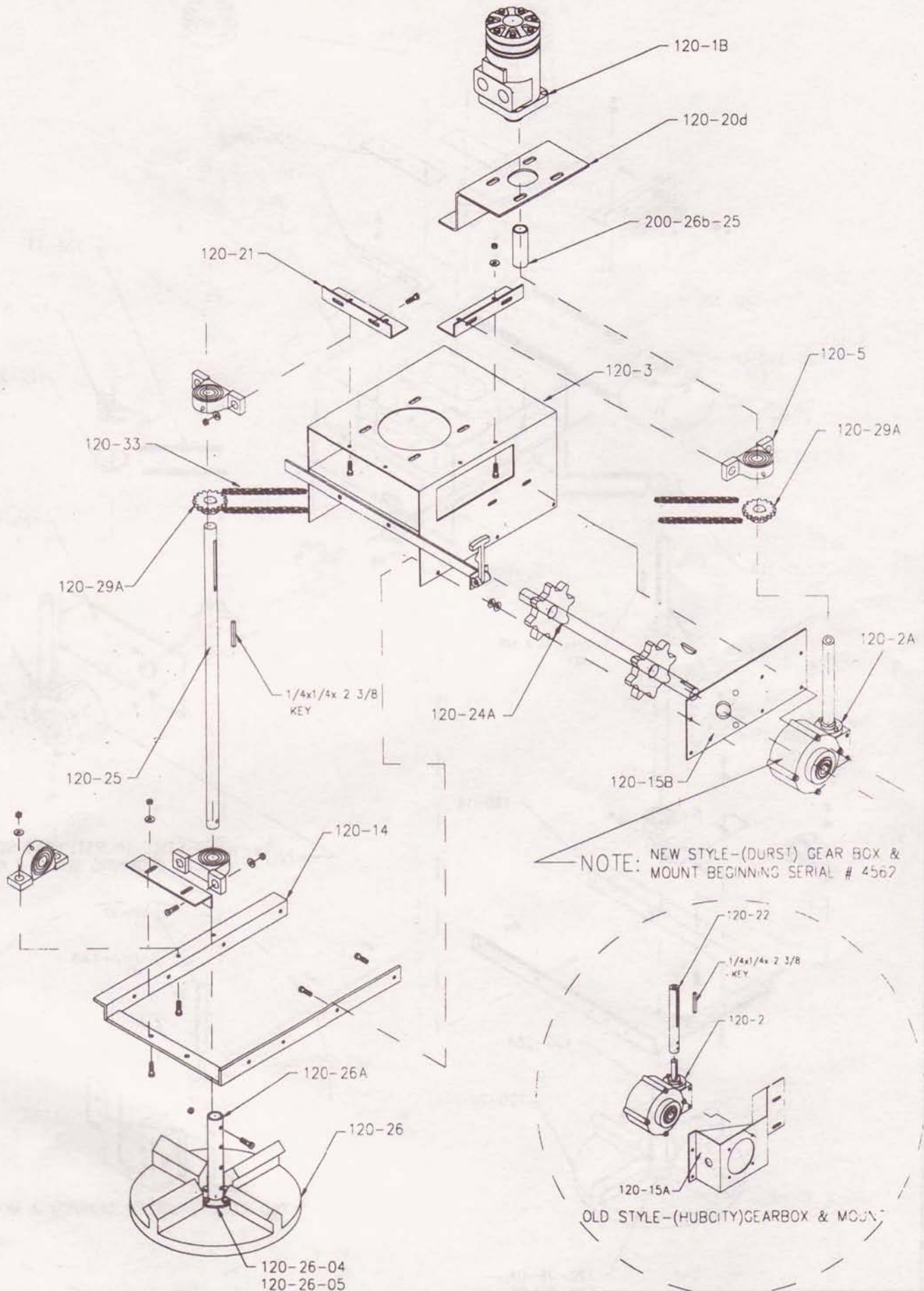
**S/S SERIES II SANDERS
PARTS LIST**

<u>P/N</u>	<u>DESCRIPTION</u>	<u>QTY</u>	<u>P/N</u>	<u>DESCRIPTION</u>	<u>QTY</u>
-1A	12VDC Electric Motor	1	120-28A	48T Sprocket (Elect)	1
1B	Hydraulic Motor	1	28B	24T Sprocket (Hyd)	1
1C	Gasoline Motor 10.5hp	1	28C	8" V Pulley w/Elect. Clutch	1
1D	Gasoline Motor 11hp Honda	1	29A	16T Sprocket (Elect.)	1
2A	Gearbox (HUBCITY W300)	1	29B	16T Sprocket (Hyd)	1
2B	Gearbox (DURST A21) start ser #4562	1	29C	16T Sprocket (Gas)	1
3	Motor Mount	1	30	Hopper Screen state size	1
4	Drive/Idler Sprocket	4	31A	24T Sprocket (Elect.)	1
5	1" Pillow Block Brg	6	31B	16T Sprocket (Hyd)	1
6A	Replaceable Plastic Slider Bed 1-3/4&3Yd	1	31C	24T Sprocket (Gas)	1
6B	Replaceable Plastic Slider Bed 1/2&1Yd	1	32A	Spinner Chain (Elect.) 64 Pitches	1
7A	Conveyor Drag Chain 1-3/4 & 3Yd	1	32B	Spinner Chain (Hyd) 50 Pitches	1
7B	Conveyor Drag Chain 1/2 & 3Yd	1	32C	Spinner V-Belt (Gas) 1/2"x32"	1
9	Hopper Flapper	1	33A	Gearbox Chain (Elect.) 74 Pitches	1
10	Return Wiper	1	33B	Gearbox Chain (Hyd) 74 Pitches	1
11	Skirt	1	33C	Gearbox Chain (Gas) 74 Pitches	1
12	Front Deflector (plastic)	1	34A	Motor Cover 1,1-3/4 & 3Yd	1
13	Hinged Deflector	3	34B	Motor Cover 1/2 Yd	1
14	Rear Support Bracket	1	35	Rear Chain Cover	2
15	Gear Box Mount	1	39A	Installation Kit (Elect.)	1
16A	Main Chain Cover 1-3/4 & 3 Yd	2	39B	Installation Kit (Hyd)	1
16B	Main Chain Cover 1Yd	2	39C	Installation Kit (Gas)	1
16C	Main Chain Cover 1/2Yd	2	-40	12" Spinner Extension Kit Complete	1
17	Hopper Door	1	40-01	Brg. Plate Ass'y. (for above kit)	1
18	Door Handle	1	40-3	Chute Extension (for above)	1
19	Door Handle Clamping Nut	1	40-6	Shaft Extension (for above)	1
20A	Elect/Hyd Motor Mount Adapter	1	99-B1411	Electric Throttle Motor (only)	1
20B	Motor Adapter-10.5hp Gas	1	120-77	Electric Throttle Kit w/controls	1
20C	Motor Adapter -Dual Hyd.	1	120-78	6' Molded Wire Connector (for motor)	1
21	Bearing Bracket	3	120-79	25' Molded Wire Connector (for supply)	1
22	Gearbox Input Shaft Ext.	1	120-80	Replacement Caps (for above connector)	1
23A	Inverted V 1-3/4 & 3Yd	1			
23B	Inverted V 1Yd	1			
24	Conveyor Shaft (Drive& Idler)	2			
25	Spinner Shaft	1			
25XL	Spinner Shaft - Extended	1			
26	Spinner	1			
26a	Spinner Hub	1			
27A	Electric Mtr. Sprocket 14T	1			
27B	Hydraulic Mtr. Sprocket 24T	1			
27C	Gasoline Mtr. Pulley 2" Dia.	1			

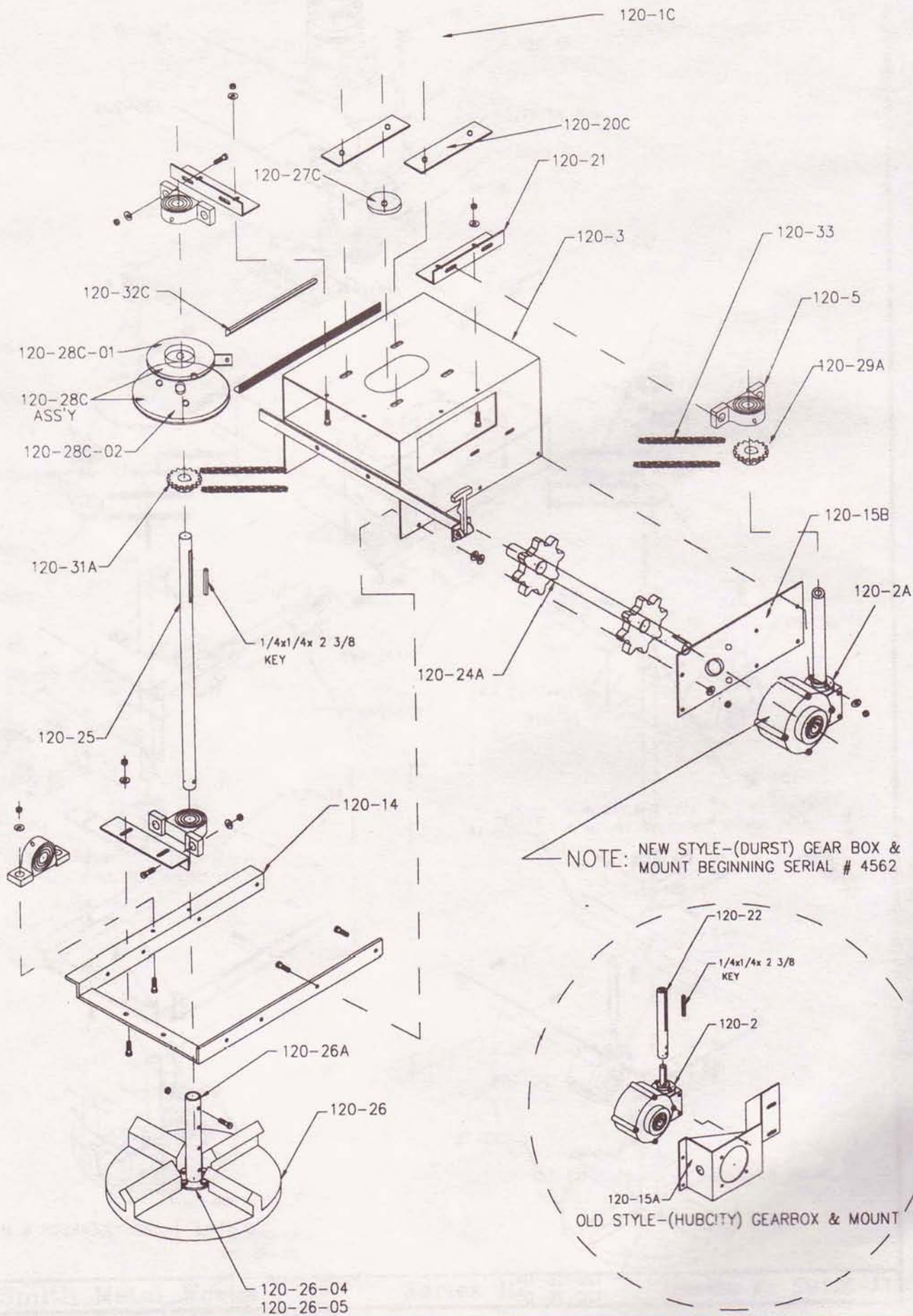
DISCHARGE SUBASSEMBLY WITH 12V DC ELECTRIC MOTOR



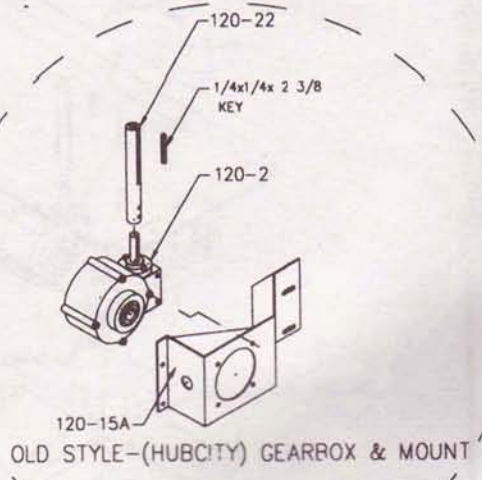
DISCHARGE SUBASSEMBLY WITH SINGLE HYDRAULIC MOTOR



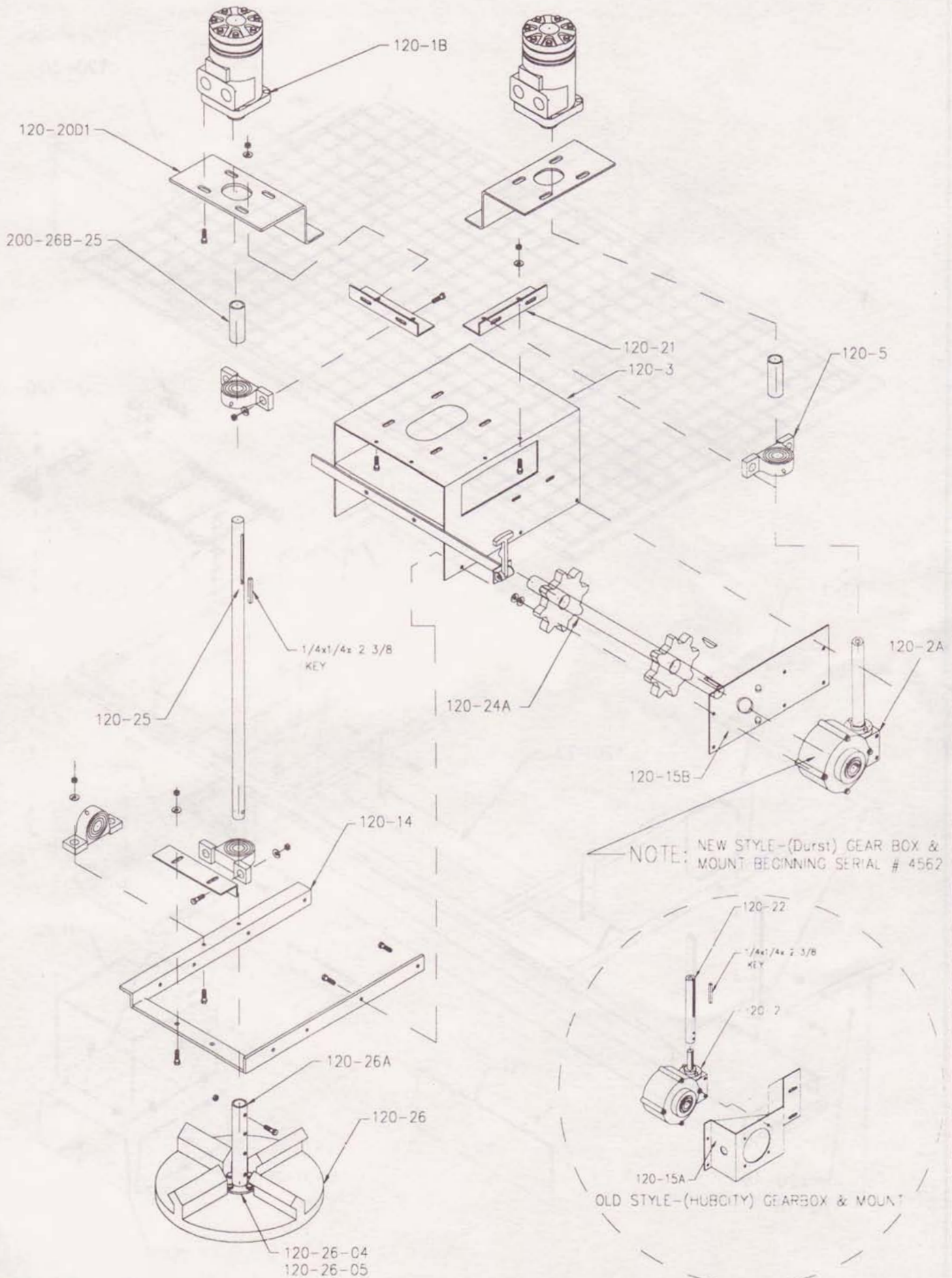
DISCHARGE SUBASSEMBLY WITH A BRIGGS AND STRATON 8.5 hp GAS MOTOR



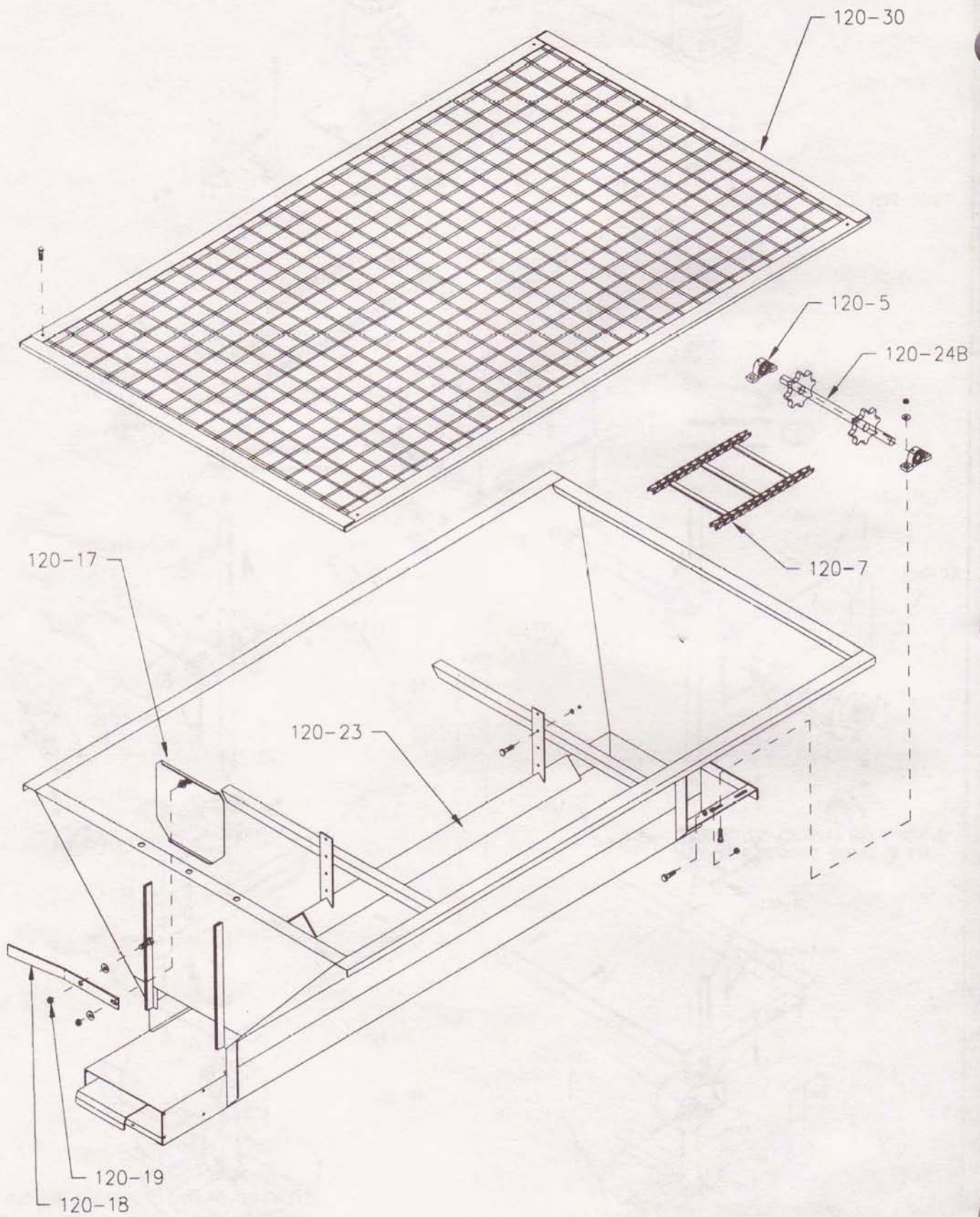
NOTE: NEW STYLE-(DURST) GEAR BOX & MOUNT BEGINNING SERIAL # 4562



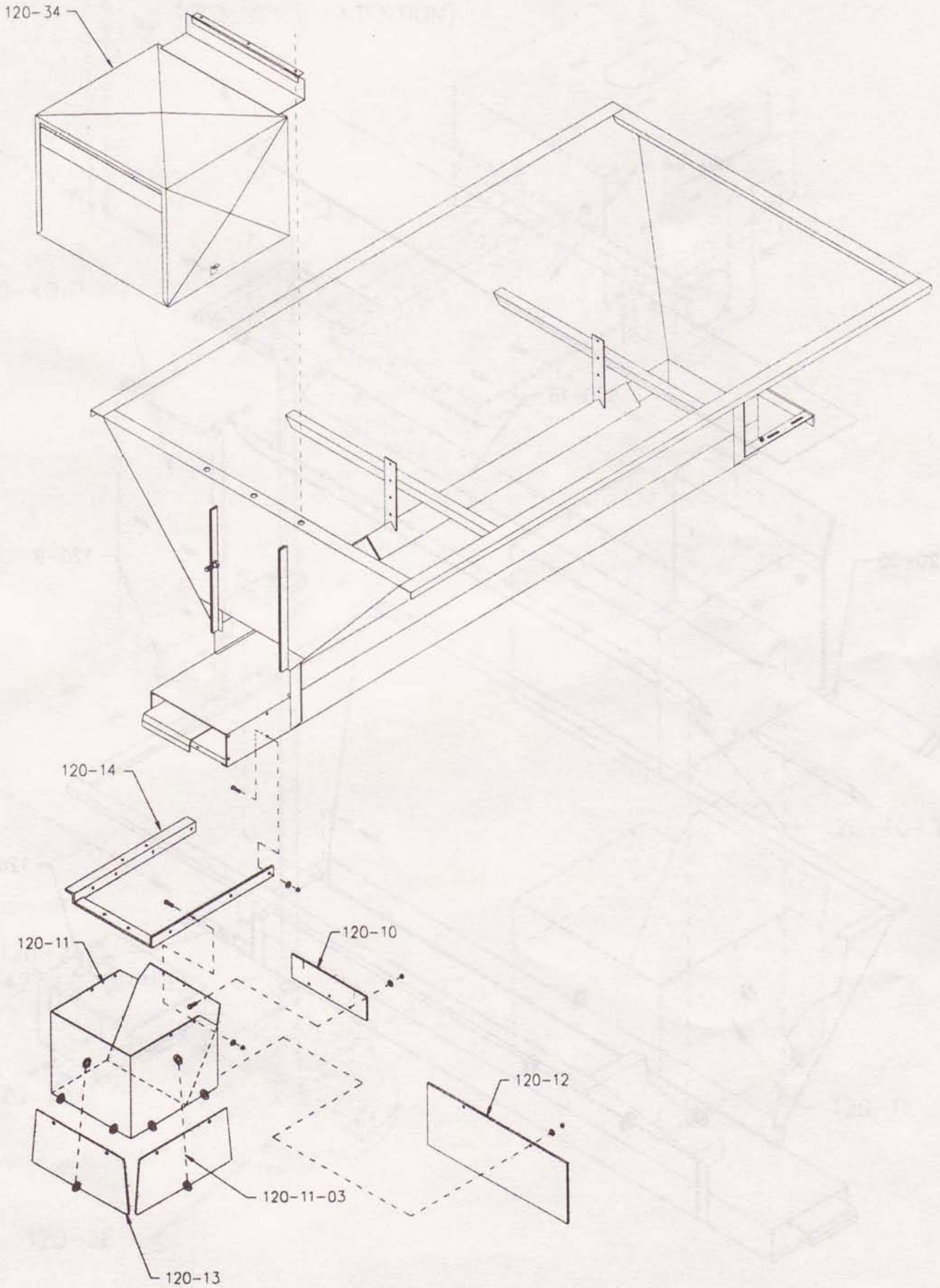
DISCHARGE SUBASSEMBLY WITH DUAL HYDRAULIC MOTOR



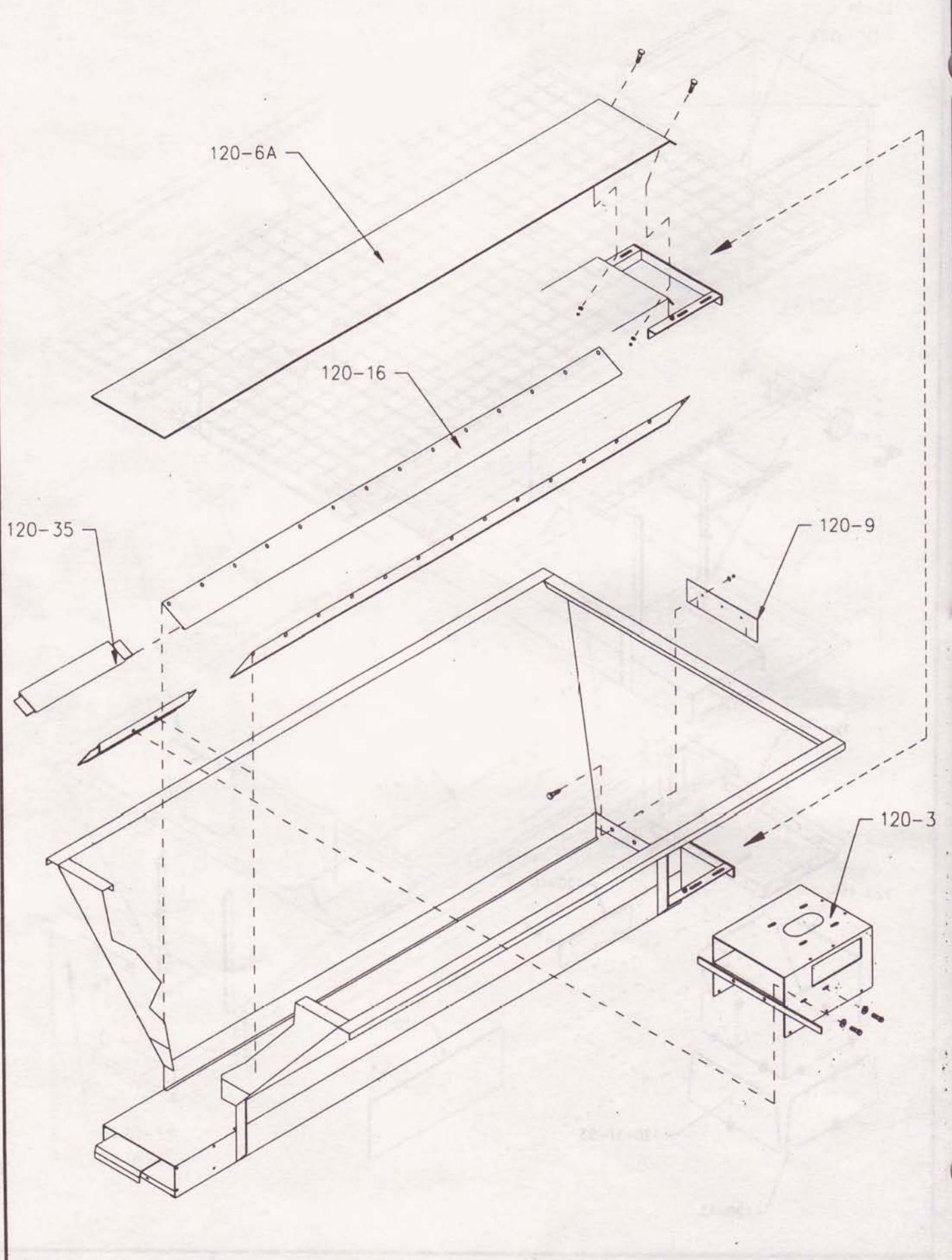
HOPPER SUBASSEMBLY



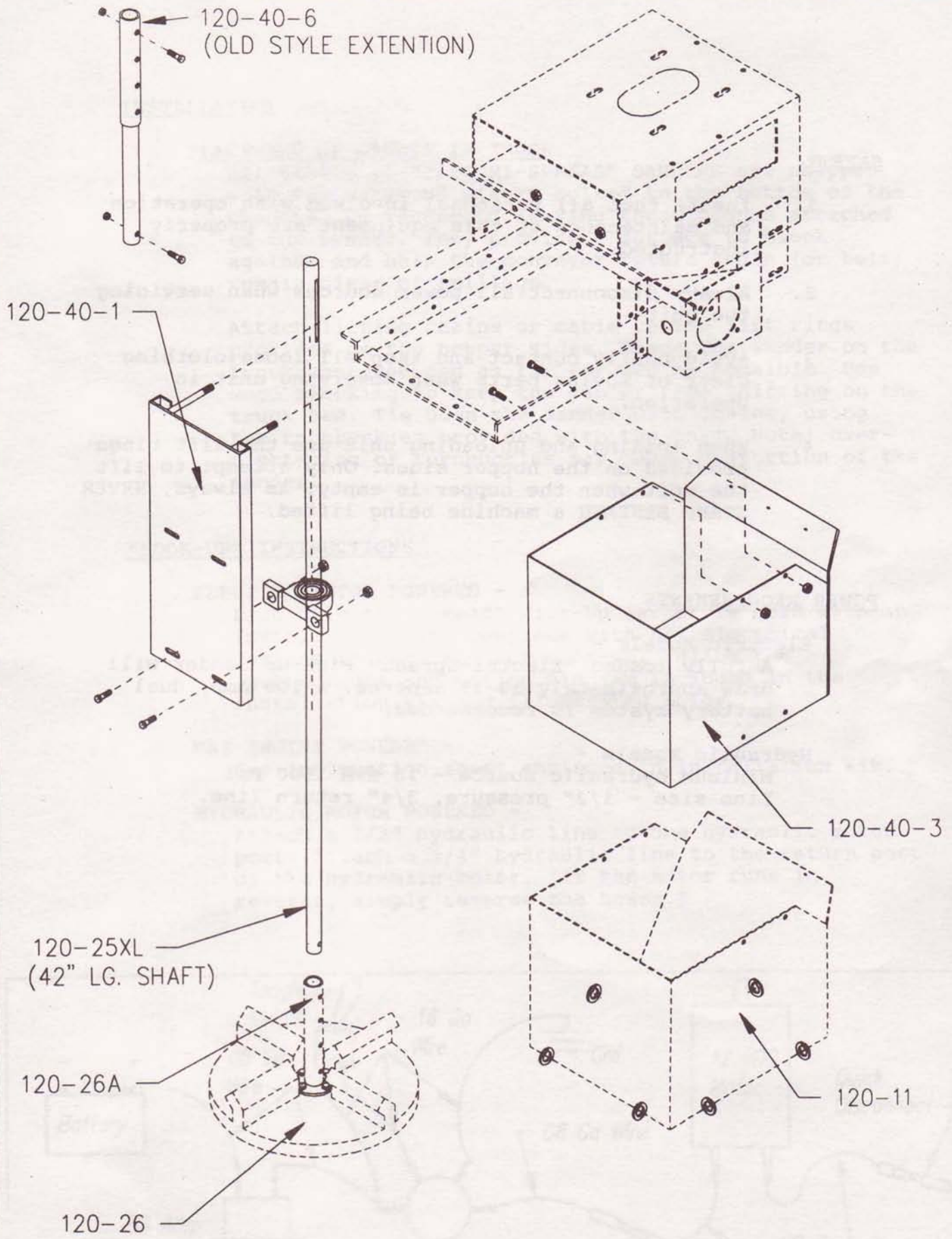
HOPPER SUBASSEMBLY II



HOPPER SUBASSEMBLY



12" SPINNER EXTENTION KIT



SAFETY

1. Insure that all personnel involved with operation and maintenance of this equipment are properly instructed.
2. Always disconnect all power sources when servicing the unit.
3. Avoid bodily contact and keep all loose clothing clear of moving parts when observing unit in operation.
4. When loading and unloading unit use the lift rings provided on the hopper sides. Only attempt to lift the unit when the hopper is empty. As always, NEVER STAND BENEATH a machine being lifted.

POWER REQUIREMENTS

Electric Models -

A fully loaded "Electri-Spread" Pick-up Sander will draw approximately 30-35 amperes. A 100 Amp, dual battery system is recommended.

Hydraulic Models -

Minimum hydraulic source - 10 GPM 1500 Psi
Line size - 1/2" pressure, 3/4" return line.

INSTALLATION

PLACEMENT OF SANDER IN TRUCK

All SERIES II "ELECTRI-SPREAD" SANDERS are shipped with two hardwood planks bolted to the bottom of the chassis. We recommend leaving these planks attached to the sander. They provide a surface to block against and help the conveyor return chain (or belt) remain clear of spillage.

Attach lifting chains or cable to the lift rings provided on the hopper sides. Place the sander on the truck centered and as far forward as possible. Use wood blocking to keep the sander from shifting on the truck bed. Tie down the sander with chains, using the turnbuckles provided with the unit. Note: over-tightening of turnbuckles may cause distortion of the sander.

"HOOK-UP" INSTRUCTIONS

ELECTRIC MOTOR POWERED -

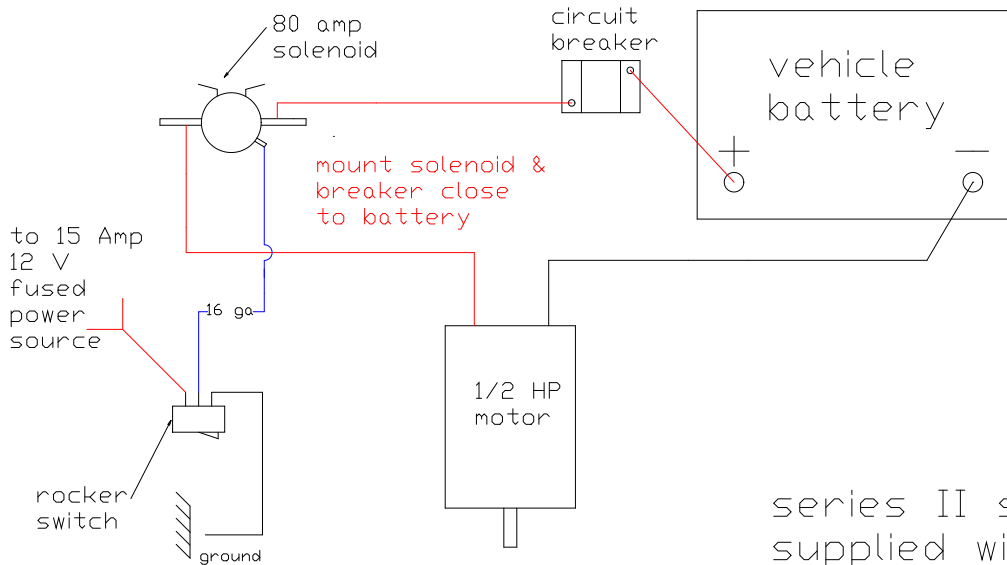
Each "Electri-Spread" Pick-Up Sander is sold with an installation kit, complete with all electrical components required for hook-up. Follow the instructions and wiring diagram included in the installation kit and illustrated below.

GAS ENGINE POWERED -

See instruction sheet enclosed in installation kit.

HYDRAULIC MOTOR POWERED -

Attach a 1/2" hydraulic line to one hydraulic motor port. Attach a 3/4" hydraulic line to the return port of the hydraulic motor. (If the motor runs in reverse, simply reverse the hoses.)



the following parts are included in the standard installation kit with each spreader:

- one solenoid - P/N 99-B98596
- one 60 amp breaker - P/N 99-60AMP
- one rocker switch and mtg. bracket
- three 16 g. female spade connectors
- 60" - 16 gauge wire
- one - 16 g. 3/16" ring terminal
- two - 6 g. 1/4" ring terminals
- two - 6 g. 5/16" ring terminals
- one - 6 g. x 25 foot power cables
- one - service manual

four - ratchet straps (P/N 120-39)
not included if install kit is ordered as a part

series II standard install kit
supplied with each new spreader
P/N 120-39A
3/2010

OPERATION

Once your "Electri-Spread" Pick-Up Sander is properly installed, we recommend a "dry run" with the hopper empty. Check for any obvious poor or faulty operation.

Load the hopper with your desired material and adjust the machine for proper "spread". Volume is controlled by the sluice gate opening, while direction and range is controlled by position of the internal chute and external deflectors. Always observe all safety rules when performing adjustments.

An inverted "V" is included as standard equipment. The purpose of the inverted "V" is to reduce load down pressure on the conveyor there by easing start-up power requirements. If the load exhibits excessive "bridging", the operator may elect to remove the inverted "V" sacrificing power consumption for improved product flow. In order to reduce power consumption on start-ups it is recommended that payload not be left in hopper over an extended period. (This might cause material freeze up.)

MAINTENANCE

Proper scheduled and performed operator maintenance is the key for successful operation.

Proper lubrication consists of keeping all grease fittings serviced. Also insure that the lubricant level in the gearbox is at the check plug level. (Use a Non-detergent 10 weight motor oil in the gearbox)

Frequent lubrication of the roller chains is also recommended.

Cleanliness of the unit helps minimize friction. Always flush off the unit after operation to prevent build-up and binding.

Proper adjustments will keep the unit operating freely. Provide only the necessary chain and/or V-belt tension and conveyor tension to maintain smooth operation. Excessive tensions will only result in overloading the motor.

OFF-SEASON MAINTENANCE (SUMMER STORAGE)

Thoroughly flush the entire unit clean of salt and sand. Lube all bearings and check gearbox lube level. we strongly recommend removal of all roller chains and conveyor chain and store immersed in oil. Failure to remove and thoroughly lubricate chains will result in an inoperative sander next season!

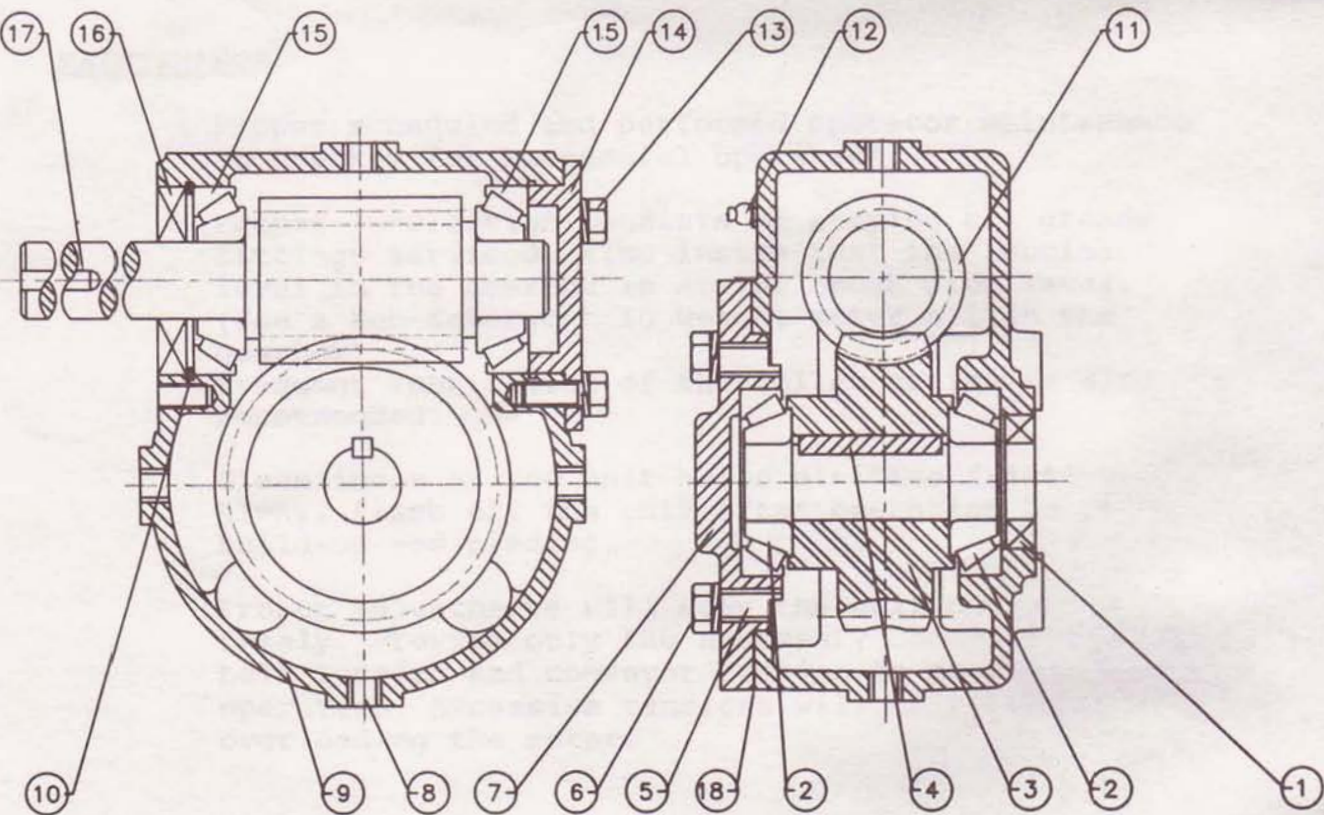
WARRANTY

SMITH METAL WORKS warrants our products to be free from defects in material and workmanship for a period of 1 (one) year from time of purchase. This warranty is limited to the repair or replacement of products failing under normal use and operation of equipment. The defective part(s) and a copy of the original paid invoice or bill of sale must be returned to the factory for repair or replacement.

CANIMEX 8039 GEARBOX – HOLLOW BORE
PARTS LIST

120-2B-

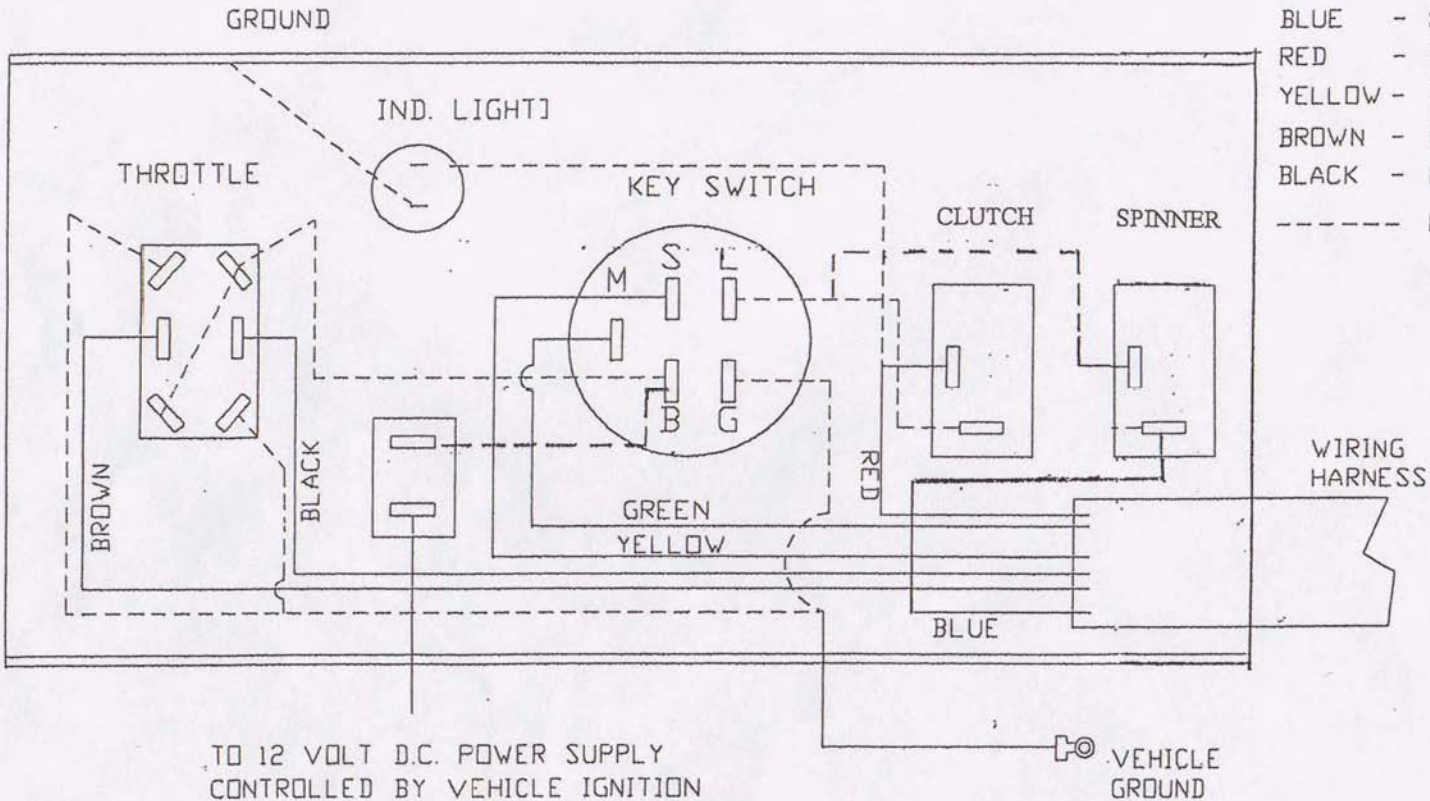
ITEM	DESCRIPTION	QTY
1	OIL SEAL	1
2	TAPERED ROLLER BEARING 30305 (25.4mm)	2
3	WORM GEAR	1
4	SQUARE KEY $\frac{1}{4} \times \frac{1}{4} \times 1\frac{1}{2}$	1
5	PLUG $\frac{3}{8}$ PT	1
6	BOLTS (M10x1.5 x 20L)	4
7	OUTPUT COVER	1
8	PLUG $\frac{1}{4}$ PT	7
9	HOUSING	1
10	INTERNAL CIRCLIP R62	1
11	INPUT WORM SHAFT	1
12	GREASE FITTING	1
13	BOLTS (M8x1.25 x 20L)	3
14	INPUT COVER	1
15	TAPERED ROLLER BEARING 30206	2
16	OIL SEAL 30 x 62 x 8; DOUBLE LIPS	1
17	SQUARE KEY $\frac{1}{4} \times \frac{1}{4} \times 7\frac{1}{2}$	1
18	GASKET	1





SERIES IV (GAS)

DASHBOARD PANEL



- GREEN - KILL
- BLUE - SPINNER
- RED - CLUTCH
- YELLOW - STARTER RELAY
- BROWN - ELEC. THROT.-RED
- BLACK - ELEC. THROT- BROWN
- PRE-WIRED

TO 12 VOLT D.C. POWER SUPPLY
CONTROLLED BY VEHICLE IGNITION

VEHICLE
GROUND

DURST A21 GEARBOX PARTS LIST

PART #	DESCRIPTION	QTY.
120-2B-		
1	HOUSING	1
2	COVER	1
3	WORM GEAR	1
4	WORM	1
5	BEARING CONE (TIMKEN 15101)	4
6	BEARING CUP (TIMKEN 15245)	4
7	SNAP RING, INPUT (5422)	1
8	SNAP RING, INPUT & OUTPUT (1208-8)	4
9	CAP SCREW (3/8-16 X 3/4)	4
10	SHAFT, INPUT	1
11	WOODRUFF KEY (807) 1/4 X 7/8	1
12	WOODRUFF KEY (809) 1/4 X 1 1/8	1
13	SEAL, INPUT & OUTPUT (NOK AE1452E)	2
14	PLUG, DRAIN & LEVEL	2
15	GASKET, COVER	1
16	PLUG, VENT	1
17	BEARING SHIELD	1
18	CAP, INPUT & OUTPUT	2
19	GREASE ZERK	1
20	NILOS RING, INPUT	1
21	SHIM (.020)	A/R

